

How to add University of Phoenix digital badges to LinkedIn®

Digital badges are icons that indicate a person has successfully demonstrated a certain skill. University of Phoenix brings skills-aligned curriculum to its associate, bachelor's and master's programs and offers digital badges to showcase the skills students learn. Follow these steps to add a badge earned through UOPX to your LinkedIn profile and other social media.



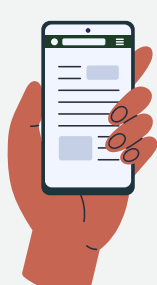
Log in to your Credly account.



Go to your dashboard and click on the badge you'd like to share.



Click **Share** at the top of the page.



You will see several options that allow you to share your badge. Click on **LinkedIn**.



Select **Connect** if you haven't connected your LinkedIn account with your Credly profile.



You will be asked to sign in to your LinkedIn profile and provide Credly access.



Next, select **Add to Profile** and click on **Share to LinkedIn**.



You will be able to add more information about your badge.



Click **Save**.

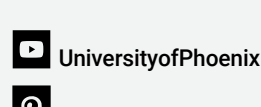
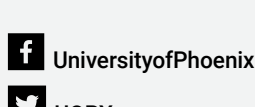
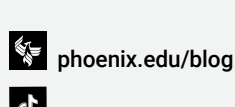


Your badge will appear under the License and Certification section of your LinkedIn profile.

Need more help? Watch Credly's how-to video [here](#).

LinkedIn is a registered trademark of LinkedIn Corporation and its affiliates in the United States and/or other countries.

Learn more about University of Phoenix's skills-aligned curriculum.



Source: <https://support.credly.com/hc/en-us/articles/360021221491-How-can-I-add-my-badge-to-my-LinkedIn-profile-and-share-to-my-feed-need>

